



Big Dutchman®



Drinking Systems

For broilers, breeders, and turkeys

BROILER DRINKERS

The **OptiGROW** nipple is manufactured from specifically selected chemical resistant stainless steel and encapsulated in an enlarged engineered thermoplastic housing. This unique design has a larger diameter triggering pin for maximum droplet retention to attract your birds.

The soft triggering of young birds allows smaller volumes of water to be delivered while the more aggressive triggering of older birds allows larger volumes of water to be delivered. This precise water delivery feature allows the birds to consume the necessary amount of water that is critical at each stage of their life for peak performance.



FAST START



BIG FINISH

BROILER PRODUCTION

Nipple	Water Column	Side Flow (mL/min)	Vertical Flow (mL/min)
4050	8"	30-40	40-50
4095		20-25	30-40

IMPORTANT ADVANTAGES

- **360° side action triggering** – Broiler nipples offer easy triggering and get day-old birds off to the best start.
- **Exact water metering at every age** – As birds grow they naturally increase the upward pressure which increases the volume of water released.
- **Simplistic design** – The nipple design includes an all stainless steel insert, multi-stage metering pin, and triggering pin, which is encased in a thermoplastic housing.
- **Square pipe advantage** – A square pipe is used which will not rotate and keeps nipples in an upright position. With a square pipe there is no need for a saddle.
- **Trouble-free performance** – All metal components are manufactured with precision machined stainless steel and DO NOT require O-rings, seals or steel balls.
- **Aluminum rails or conduit** – Choose from aluminum or conduit support.
- **Simple and quick assembly** – Watering sections are shipped pre-assembled and ready to install.
- **Raised water entry point** – The nipple's raised water entry point inside the water pipe eliminates the possibility of sediments entering the nipple.
- **Large surface area for water entry** – Unlike the competition, the water metering pin has a large diameter which enables it to more effectively capture and direct water into the nipple.
- **Optional LitterGard cups** – The LitterGard cups will catch the occasional drip in order protect the litter and improve environmental conditions.



BROILER DRINKER COMPONENTS

OPTIMA E-FLUSH PRESSURE REGULATOR

The Optima E-Flush pressure regulator has built-in flushing capabilities with a simple half twist of a knob. Water pressure is easily adjusted with the regulator knob located underneath the unit. The clear flexible standpipe with float ball offers accurate reading of water pressure.



SOLENOID

The optional screw-in solenoid allows automatic flushing of the drinker line when used with the LCW Touch Control. Manual flushing is also still possible when using the solenoid.



Optional solenoid

SLOPE REDUCER

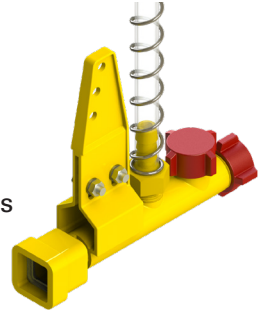
The patented slope reducer effectively adjusts water pressures on the drinking line in buildings with sloped floors. Slope reducers are available in 4", 6", and 8" slope increments.



An adjustable slope reducer is available and can be adapted to the slope specific at your farm.

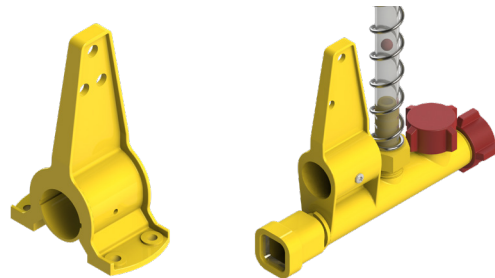
FLUSH BREATHER UNIT

The flush breather unit incorporates a clear flexible standpipe and float ball for establishing an accurate water pressure adjustment, and also includes hose attachments for automatic flushing and cleaning.



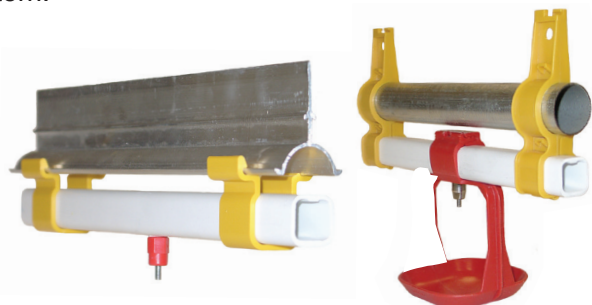
OPTIONAL CONDUIT SUPPORT

The optional watering support rails allow customers flexibility in building the watering system that best meets their needs. Customers can now choose between aluminum support rails and 3/4 inch conduit. The modular design also makes it easy to retrofit these watering sections onto any competitor's drinker lines without having to replace existing suspension, aluminum/conduit, regulators and end assemblies.



UPGRADE SECTIONS

Upgrade your existing sections without changing the entire drinking system. Pipe/rail adapters are designed to accommodate square water pipes onto any nipple drinking system.



BREEDER DRINKERS



BREEDER PULLETS



BREEDER PRODUCTION

IMPORTANT ADVANTAGES

- **Exact water metering at every age** – As birds grow they naturally increase the upward pressure which increases the volume of water released.
- **Simplistic design** – The nipple design includes an all stainless steel insert, multi-stage metering pin, and triggering pin, which is encased in a thermoplastic housing.
- **Square pipe advantage** – A square pipe is used which will not rotate and keeps nipples in an upright position. With a square pipe there is no need for a saddle.
- **Trouble-free performance** – All metal components are manufactured with precision machined stainless steel and DO NOT require O-rings, seals or steel balls.
- **Aluminum rails or conduit** – Choose from aluminum or conduit support.
- **Simple and quick assembly** – Watering sections are shipped pre-assembled and ready to install.
- **Raised water entry point** – The nipple's raised water entry point inside the water pipe eliminates the possibility of sediments entering the nipple.
- **Large surface area for water entry** – Unlike the competition, the water metering pin has a large diameter which enables it to more effectively capture and direct water into the nipple.
- **Optional LitterGard cups** – The LitterGard cups will catch the occasional drip in order protect the litter and improve environmental conditions.

BREEDER PULLETS

Nipple	Water Column	Side Flow (mL/min)	Vertical Flow (mL/min)
4077	8"	20-30	40-50
4078		20-30	40-50
4095		20-25	30-40

BREEDER PRODUCTION

Nipple	Water Column	Side Flow (mL/min)	Vertical Flow (mL/min)
4071	8"	NA	40-50



BREEDER DRINKER COMPONENTS

OPTIMA E-FLUSH PRESSURE REGULATOR

The Optima E-Flush pressure regulator has built-in flushing capabilities with a simple half twist of a knob. Water pressure is easily adjusted with the regulator knob located underneath the unit. The clear flexible standpipe with float ball offers accurate reading of water pressure.



SOLENOID

The optional screw-in solenoid allows automatic flushing of the drinker line when used with the LCW Touch Control. Manual flushing is also still possible when using the solenoid.



Optional solenoid

SLOPE REDUCER

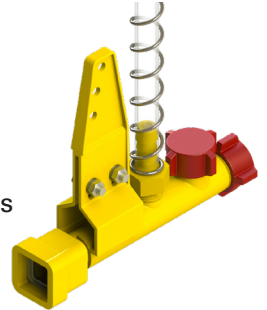
The patented slope reducer effectively adjusts water pressures on the drinking line in buildings with sloped floors. Slope reducers are available in 4", 6", and 8" slope increments.



An adjustable slope reducer is available and can be adapted to the slope specific at your farm.

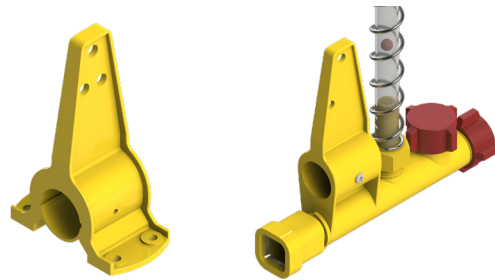
FLUSH BREATHER UNIT

The flush breather unit incorporates a clear flexible standpipe and float ball for establishing an accurate water pressure adjustment, and also includes hose attachments for automatic flushing and cleaning.



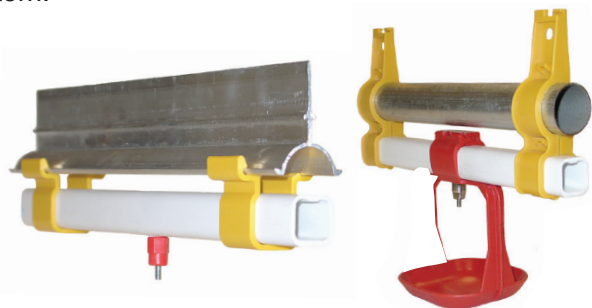
OPTIONAL CONDUIT SUPPORT

The optional watering support rails allow customers flexibility in building the watering system that best meets their needs. Customers can now choose between aluminum support rails and 3/4 inch conduit. The modular design also makes it easy to retrofit these watering sections onto any competitor's drinker lines without having to replace existing suspension, aluminum/conduit, regulators and end assemblies.



UPGRADE SECTIONS

Upgrade your existing sections without changing the entire drinking system. Pipe/rail adapters are designed to accommodate square water pipes onto any nipple drinking system.



TURKEY DRINKERS



BROOD/HEN FINISHING



TOM FINISHING

IMPORTANT ADVANTAGES

- **Twin-nipple technology** – Vertical triggering twin-nipples require minimal trigger force.
- **Minimal sliding friction** – Patented, vertical action design eliminates nearly all sliding friction between parts, reducing wear and extending product life.
- **Easy cleaning** – Solid pendulum with outer surface water flow, along with hygienic design, makes it easy to clean.
- **Simple assembly** – Large diameter pivot pin requires no tools for assembly.

TURKEY PRODUCTION

Nipple	Water Column	Side Flow (mL/min)	Vertical Flow (mL/min)
4001-4	8"	NA	150

BROOD/HEN FINISHING

The **EasyLine2.0** cup with stainless steel insert for brood and hen finishing is designed to deliver the proper amount of water to the birds from day one through every stage of their life. Water is delivered into the cup by means of the pendulum. The size of the oval cup provides easy access to the young poults and is designed to keep the litter dry during grow-out.

TOM FINISHING

The **EasyLine2.0** cup for tom finishing incorporates a fixed stainless steel insert and is designed to handle the aggressive behavior of larger birds. An optimal supply of water is provided to the cup through the pendulum.

The design of this cup is larger in diameter to help reduce the possibility of water spillage and improve litter conditions throughout the building.



TURKEY DRINKER COMPONENTS

EASYLINE 2.0 PENDULUM DESIGN

At the heart of the system is the pendulum which triggers the nipples vertically allowing water to flow along the outside of the pendulum into the cup. When the drinking system is at the proper height, the feathers on the neck of the birds keep the edge of the cups clean.

Recommended number of birds/nipple:

Brooding: 30-40

Tom finishing: approx. 20

Hen finishing: 25-30

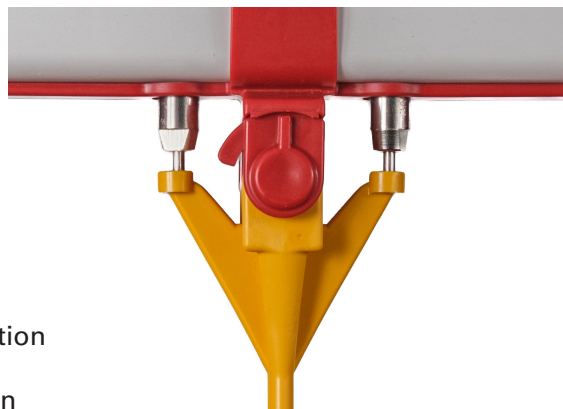
Versions of 10' sections:

Brooding or hen finishing:

3, 4, 5, and 6 drinkers / section

Tom finishing:

3, 4, and 5 drinkers / section



OPTIMA E-FLUSH PRESSURE REGULATOR

The Optima E-Flush pressure regulator has built-in flushing capabilities with a simple half twist of a knob. Water pressure is easily adjusted with the regulator knob located underneath the unit. The clear flexible standpipe with float ball offers accurate and precise water pressure adjustment.



SOLENOID

The optional screw-in solenoid allows automatic flushing of the drinker line when used with the LCW Touch Control. Manual flushing is also still possible when using the solenoid.



Optional solenoid



4001-4 STAINLESS STEEL NIPPLES

The 4001-4 nipple is manufactured from specifically selected chemical resistant stainless steel, and engineered to be a long lasting nipple while optimizing bird growth.



FLUSH BREATHER UNIT

The flush breather unit incorporates a clear flexible standpipe and float ball for establishing an accurate water pressure adjustment, and also includes hose attachments for automatic flushing and cleaning.



SPRINGLESS SIGHT TUBE AND BREATHER UNIT

All breather units are now supplied with no outer springs and offer improved features:

- Chemically resistant clear tubing with shape memory
- Easy cleaning
- Optimum visibility of water column indicating ball
- Improved sealing capabilities

POLYURETHANE SIGHT TUBE:

- High elasticity material with no deformation offers spring-like properties to return the tube to its original vertical shape
- Material is resistant to chemical exposure and staining, keeping the inside surface clean and transparent
- Elimination of outer spring makes cleaning outside of tube easier and less tedious

STAINLESS STEEL CRIMP RING:

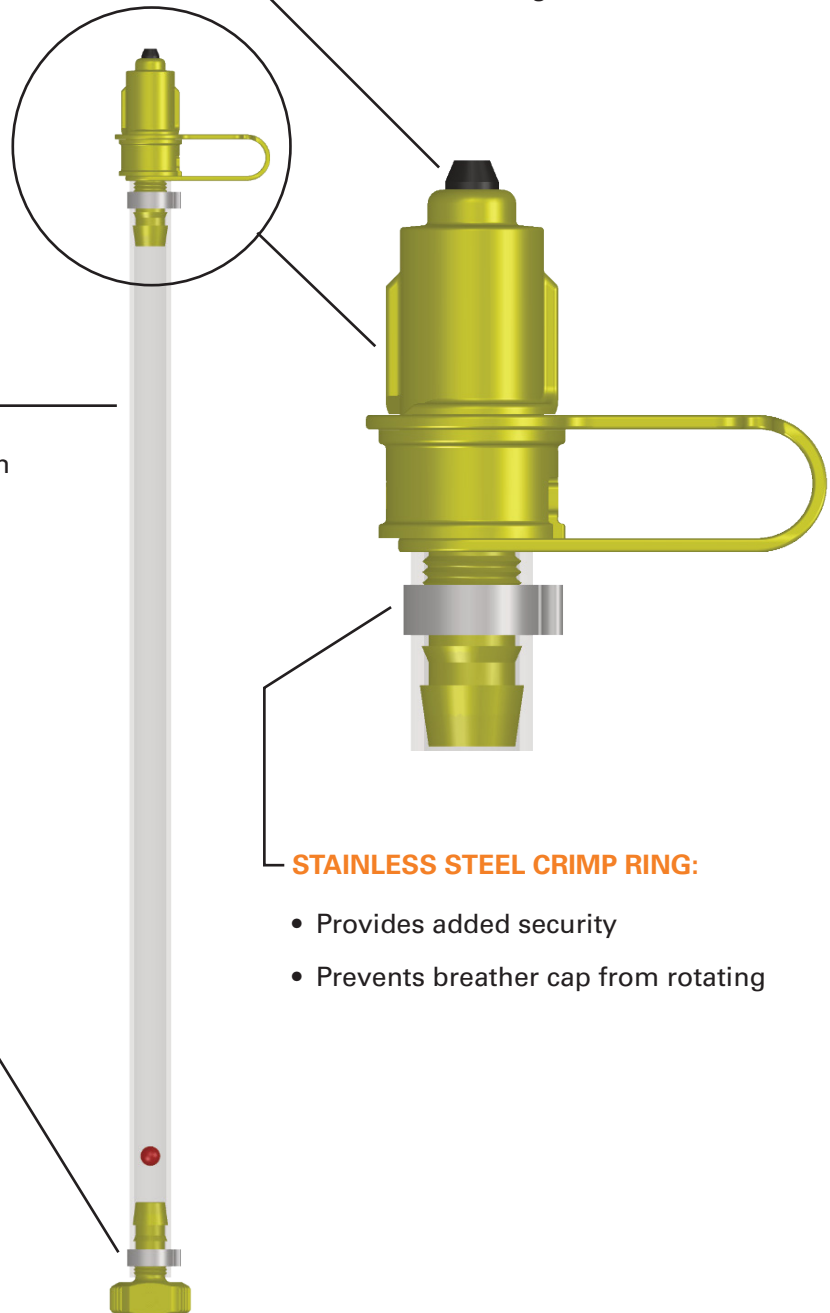
- Provides added security

IMPROVED BREATHER SEAL:

- Made from flexible PVC for high chemical resistance
- Sealing design allows valve to remain open for airflow and close at water onset to minimize water egress into environment

STAINLESS STEEL CRIMP RING:

- Provides added security
- Prevents breather cap from rotating



Big Dutchman.

Big Dutchman North America
3900 John F. Donnelly Dr. · Holland, MI 49424
Tel. +1-616-582-4000 · Fax +1-616-392-6188
info@bigdutchmanusa.com · www.bigdutchmanusa.com

Details are subject to change: 04/25